

PART LIST: BC604 EVO

Refer to Figs. 7-1, 7-2 and 7-3 for the locations of the parts shown in the table below.

Item	Part #	Qty	Description
1	DV-225	1	Spindle Nut Lock Plate
2	DV-220G	1	Spindle Housing
3	DV-216D	1	Spindle Nut
4	DV-211K	1	Spindle
5	DV-089	1	Bearing & Seal Kit
6	DV-809	1	Top Disc
7	DV-303B	3	Puck
8	DV-314	3	Cutting Knife
9	DV-854	1	Knife Bolt Kit
10	DV-894	1	Spindle Bolt Kit
11	DV-810	1	Bottom Disc Assy
12	DV-320A-M	1	Spindle Bolt Guard
13	DV-208A KIT	1	Bolt Kit
14	DV-305A	1	Disc Spacer
15	DV-223*	1	Motor Pilot Ring*
16	DV-201C	1	Anti-Cavitation Housing
17	DV-149	4	Motor Washer
18	DV-209 KIT	1	Bolt Kit
19	DV-175	1	Hydraulic Motor
20	DV-207	1	Anti-Cavitation Cartridge
21	DV-210 KIT	1	Bolt Kit
22	DV-213*	1	Grease Nipple*
23	DV-204*	1	Grease Nipple*
24	DV-205A KIT	1	Allen Head Cap Screw
25	DV-206	1	M-ORB Hex Head Plug
26	DV-214	2	O-Ring *not shown
27	DV-559 or DV-560	2	Quick Coupler
28	DV-H814W7540	2	Hose
29	DV-746	1	Knife replacement Kit*
30	DV-003	2	Rod End Kit
31	DV-900B	1	Safety Bar
32	DV-121	1	Inspection cover (See Figure 4-1)

* Not Shown

FIGURE 7-1

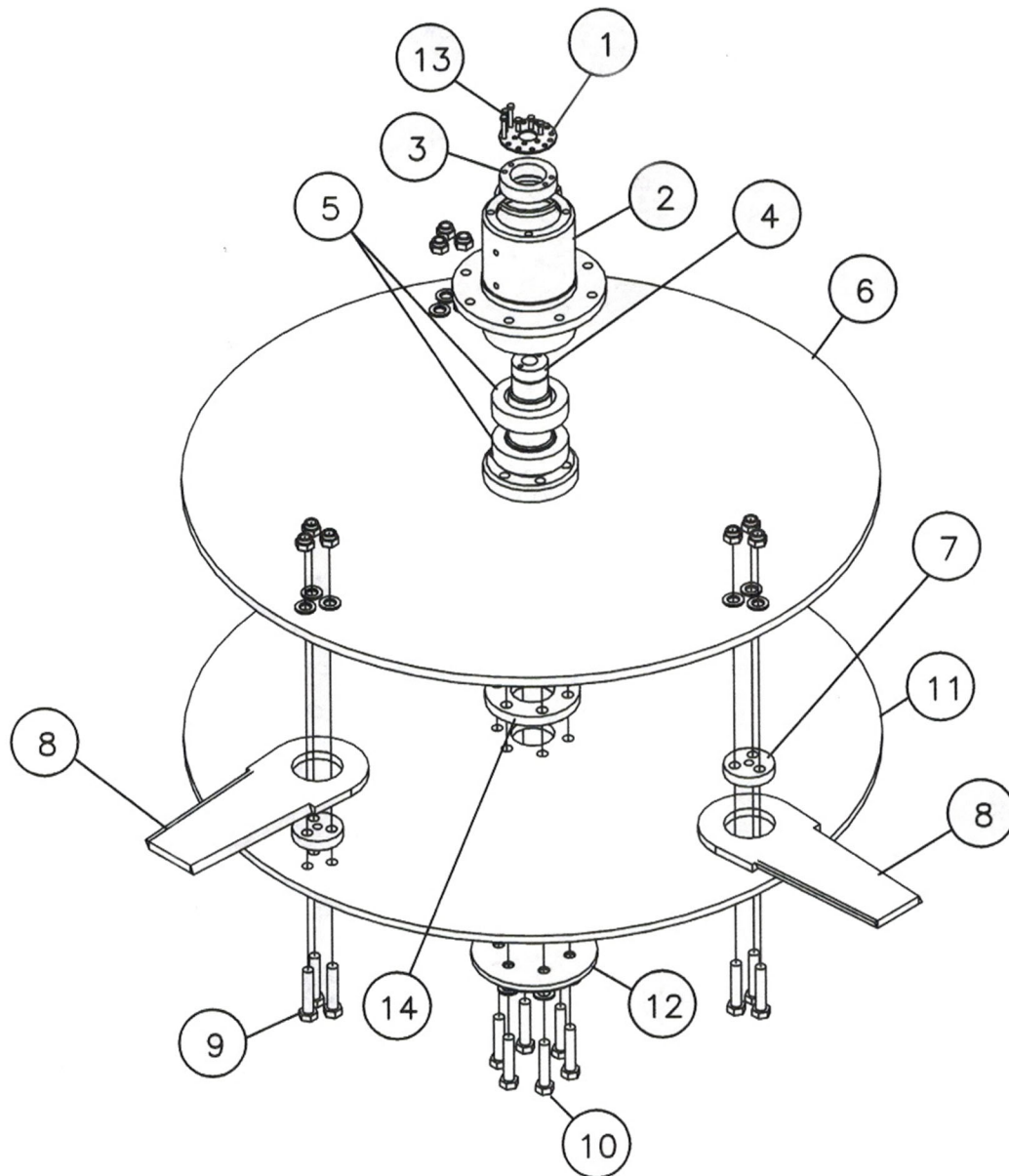


FIGURE 7-2

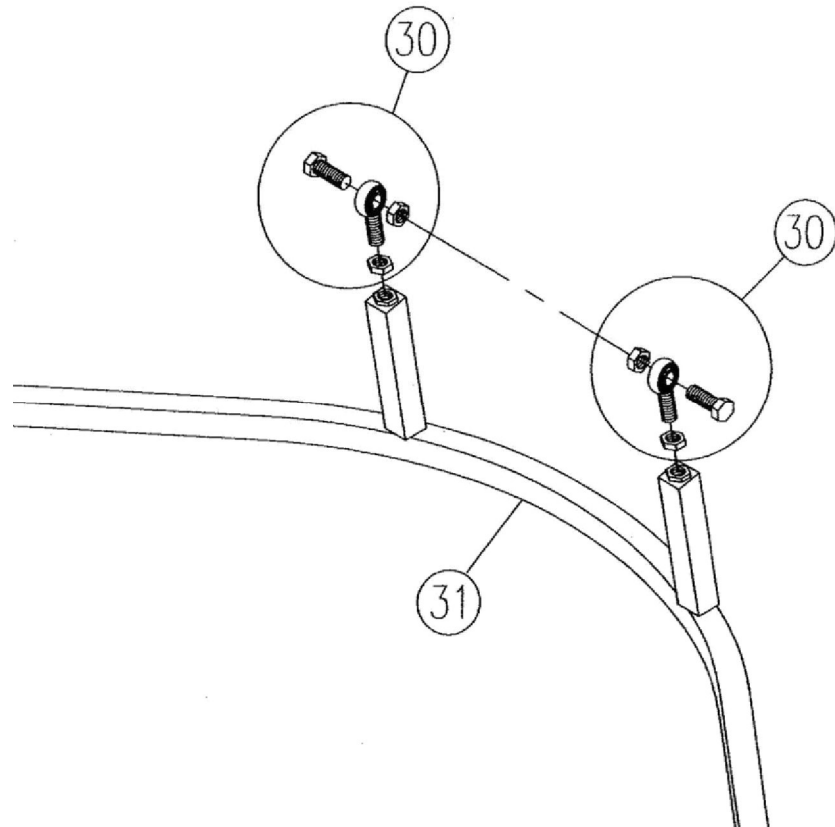
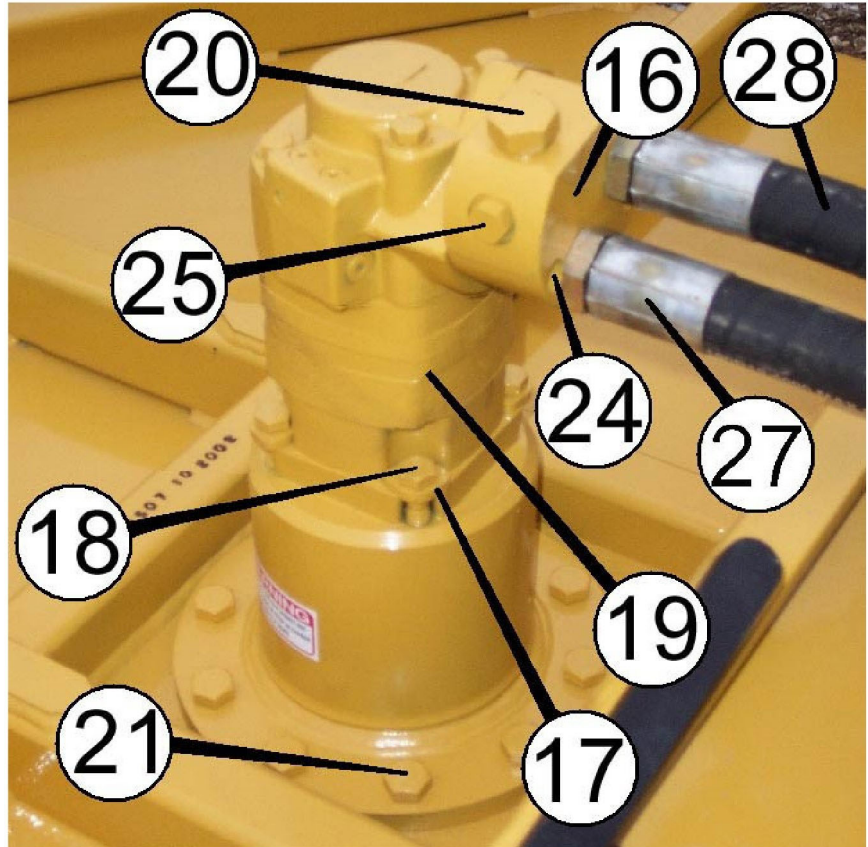


FIGURE 7-3