

PART LIST: BC-504

Refer to Figs. 7-1, and 7-2 for the locations of the parts shown in the table below.

Item	Part #	Qty	Description
1	DV-225	1	Spindle Nut Lock Plate
2	DV-821E	1	Spindle Housing
3	DV-216D	1	Spindle Retaining Nut
4	DV-820A	1	Spindle
5	DV-880	1	Bearing and Seal Kit
6	DV-809	1	Top Disc
7	DV-303B	3	Puck
8	DV-314	3	Cutting Knife
9	DV-854	1	Knife Bolt Kit
10	DV-894	1	Spindle Bolt Kit
11	DV-849	1	Bottom Disc Assembly
12	DV-320A	1	Spindle Bolt Guard
13	DV-208A KIT	1	Spindle Nut Lock Plate Bolt Kit
14	DV-305A	1	Disc Spacer
15	DV-223	1	Motor Pilot Ring (hidden in Fig.7-2)
16	DV-832C	1	Anti-Cavitation Housing
17	DV-149	2	Washer (hidden in Fig.7-2)
18	DV-884	1	Motor Bolt Kit (hidden in Fig.7-2)
19	DV-875	1	Eaton Hydraulic Motor
20	DV-287	1	Check Valve
21	DV-210 KIT	8	Bolt (hidden in Fig.7-2)
22	DV-213	1	Grease Zerk
23	DV-204	1	Grease Zerk
24	DV-885	1	Anti-Cavitation Bolt Kit (hidden in Fig.7-2)
25	DV-891	1	Plug
26	DV-892	2	O-Ring (Not Shown In Fig.7-2)
27	DV-H504962W	2	Hydraulic Hose
28	DV-557	1	Quick Coupler Male (hidden in Fig.7-2)
29	DV-556	1	Quick Coupler Female (hidden in Fig.7-2)
30	DV-240	4	Adapter (hidden in Fig.7-2)
31	DV-321A-M	1	Inspection Cover (See Fig. 4-1)
32	DV-746	1	Knife Replacement Kit- Not Shown

FIGURE 7-1

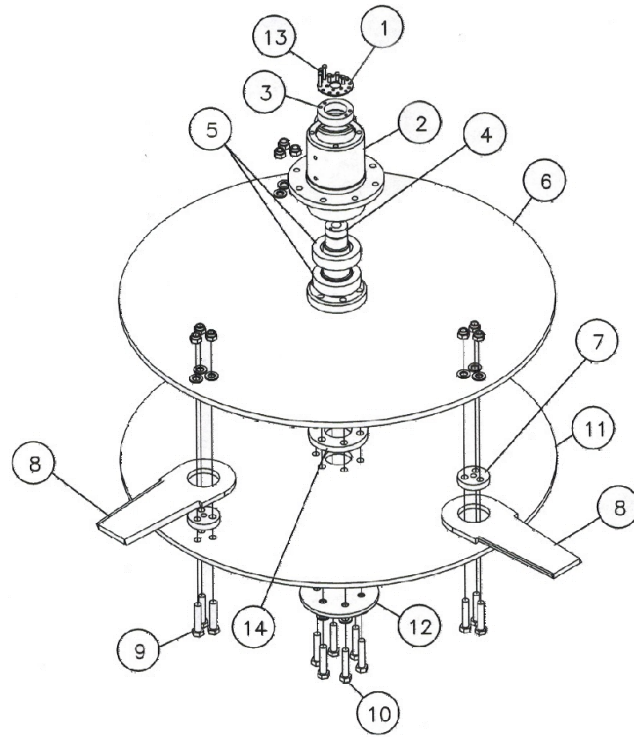


FIGURE 7-2

