

PART LIST: BC-402

Refer to Figs. 7-1, and 7-2 for the locations of the parts shown in the table below.

Item	Part #	Qty	Description
1	DV-196	1	Spindle Nut Lock Plate
2	DV-198	1	Spindle Housing
3	DV-244A	1	Spindle Retaining Nut
4	DV-245	1	Spindle
5	DV-192	1	Bearing and Seal Kit
6	DV-246	1	Top Disc
7	DV-194	3	Puck
8	DV-195	3	Cutting Knife
9	DV-247	1	Kit, Knife Bolt
10	DV-68-Kit	1	Kit, Bolt Spindle
11	DV-248	1	Bottom Disc Assembly
12	DV-251	1	Spindle Bolt Guard
13	DV-208-Kit	1	Kit, Bolt Spindle Lock
14	DV-327	1	Disc Spacer
15	DV-286	1	Relief
16	DV-197	1	Check Block
17	DV-287	1	Check Valve * not shown
18	DV-191	2	Teflon Washer * not shown
19	DV-332A	1	Hydraulic Motor
20	DV-213	2	Grease Nipple
21	DV-121A	1	Inspection Cover Plate* not shown
22	H65-2W402	2	Hose
23	DV-557	1	Quick Coupler-Female
24	DV-558	1	Quick Coupler-Male
25	DV-319	2	Adapter* not shown
26	DV-985	1	Knife Replacement Kit *not shown
27	DV-318	2	Adapter

FIGURE 7-1

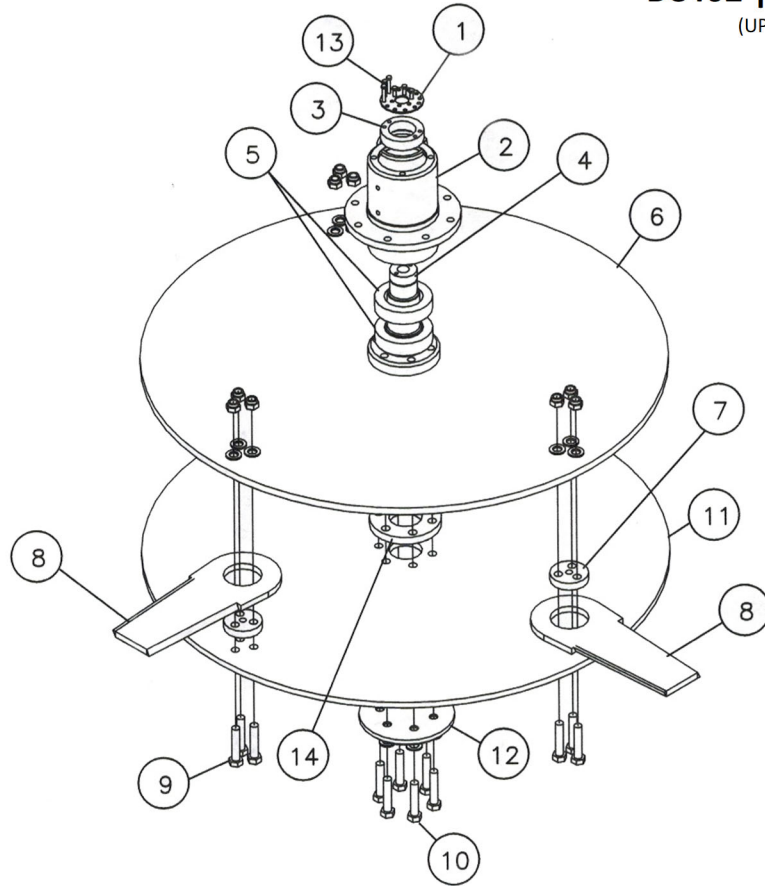


FIGURE 7-2

