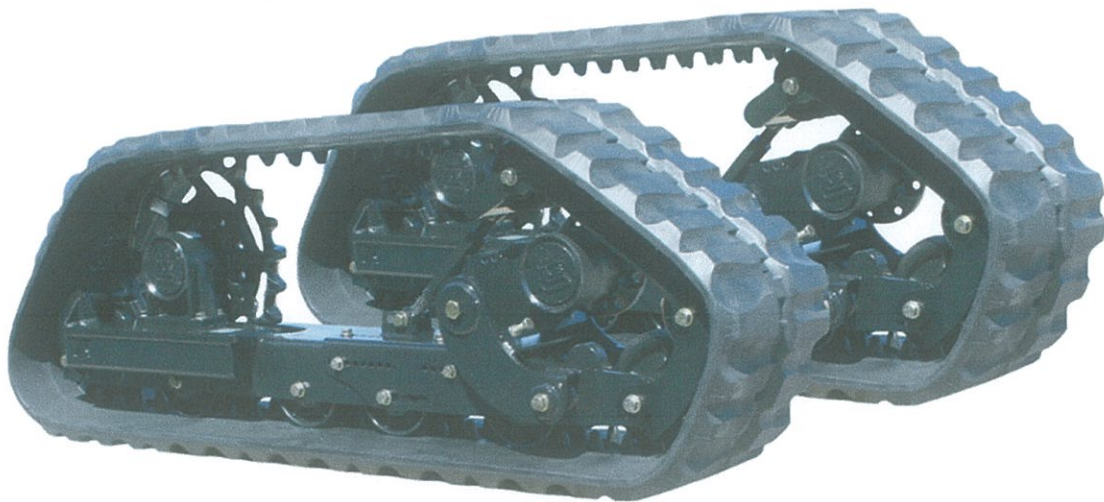




# **86+ VTS**

*Versatile Track System*



# Table of Contents

## VTS 86+ MODELS

|                            |         |
|----------------------------|---------|
| 1. RH Front Hub Assembly   | PAGE 25 |
| 2. LH Front Hub Assembly   | PAGE 26 |
| 3. Rear Hub Assembly       | PAGE 27 |
| 4. Tension Arm Assembly    | PAGE 28 |
| 5. Tunnel Assembly         | PAGE 29 |
| 6. Tunnel Idler and Bogies | PAGE 30 |

## ADDITIONAL NOTES

### VTS 50+

The 50+ VTS systems are the compact assemblies for the small skid steers that have a horse power range of 50 to 60 horse power. These VTS only come with a 12" or 15" wide track. The 50+ undercarriages are made of lighter gauge steel and cannot be used on the heavier higher horse power 65+ and 86+ machines.

**65+ VTS** The 65+ VTS systems are Heavier assemblies for the large skid steers that have a horse power range of 65 to 85 horse power. These VTS only come with 18" wide tracks. The 65+ undercarriages are made of heavier gauge steel than the 50+ undercarriages.

**86+ VTS** The 86+ VTS systems have the same style undercarriage as the 65+, however, this undercarriage system has 4 bogey wheels instead of 3 and it also has 4 split bogey wheels instead of 2. The 86+ VTS systems only get 18" wide tracks, and will not fit on the 65+ horse power machines.

## REPLACING BEARINGS AND SEALS ON VTS

**COMPONENT PARTS ARE AVAILABLE TO REBUILD HUBS, BOGEYS, SPLITS BOGEYS, TENSION ROLLERS AND IDLERS FROM SERIAL NUMBER 33206 TO CURRENT. COMPONENT PARTS ARE NOT AVAILABLE TO REBUILD HUBS, BOGEYS, SPLITS BOGEYS, TENSION ROLLERS AND IDLERS FROM SERIAL NUMBER 20000 TO 33205. WHEN REPLACING ROLLERS WITH THE METAL FACE SEALS CONTACT THE FACTORY FOR SPECIAL HANDLING INSTRUCTIONS.**

## IMPORTANT

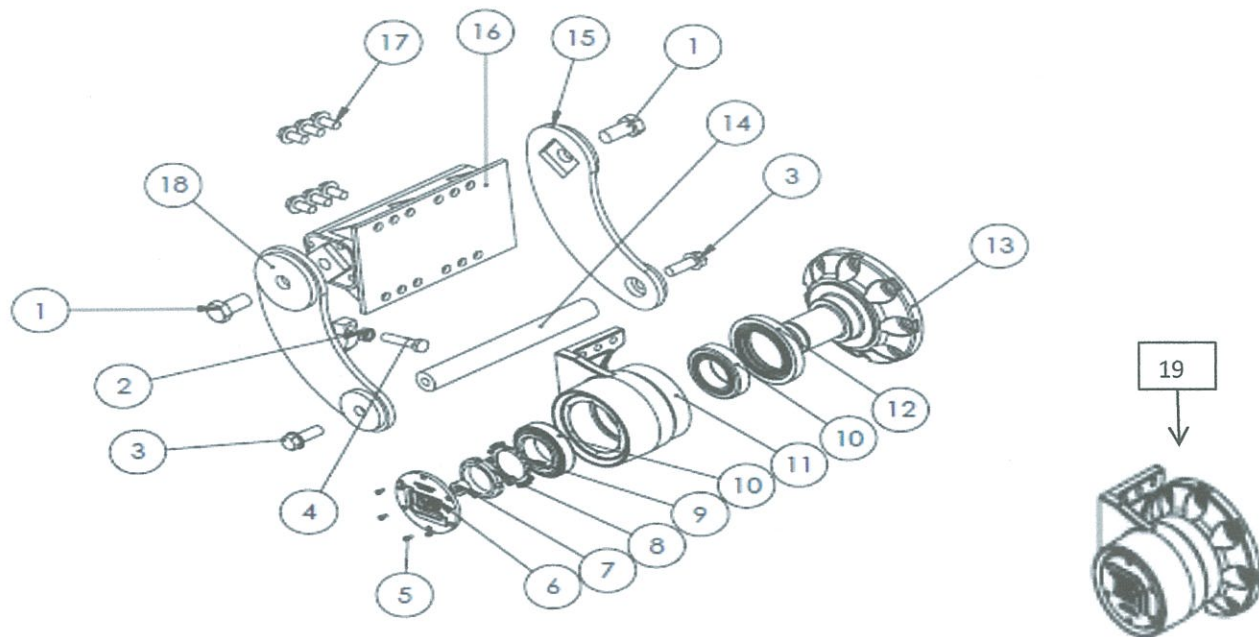
**WHEN MOUNTING THE VTS TO THE MACHINE THE LUG NUTS NEED TO BE TORQUED AT 190 FT/LBS DO NOT TORQUE TO THE TIRE TORQUE RATING.**

## VTS 86+ RH FRONT HUB ASSEMBLY

FOR ALL VTS 86+ MODELS

REV.050914

| REF:NO. | PART NUMBER   | QTY | DESCRIPTION                                    |                                 |  |  |
|---------|---------------|-----|--|---------------------------------|--|--|
| 1       | 400665        | 2   | BOLT, 1-14UNC X 2.00" GRD. 8 PLATED            | TORQUE AT 750 FT/LBS - CRITICAL |  |  |
| 2       | PH0190-5CP    | 1   | NUT 5/8"-11UNC GRD. 8 JAM NUT                  |                                 |  |  |
| 3       | PD5210-2CP    | 2   | BOLT, FLANGE 3/4"-10UNC X 2.0" GRD. 8 PLATED   | TORQUE AT 376 FT/LBS            |  |  |
| 4       | PD0190-3CP    | 1   | BOLT 5/8"-11 NC X 3.0" GRD. 8 PLATED FI THRD.  |                                 |  |  |
| 5       | 400518        | 6   | SCREW,CAP 10-24 X .375                         |                                 |  |  |
| 6       | 400513        | 1   | COVER, DUST                                    |                                 |  |  |
| 7       | 400656        | 1   | SOCKET PIPE PLUG 3/4 X 3/4                     |                                 |  |  |
| 8       | 400350        | 1   | NUT, LOCK                                      |                                 |  |  |
| 9       | 401447        | 1   | WASHER,LOCK                                    |                                 |  |  |
| 10      | 401398        | 2   | BEARING , TAPERED ROLLER                       |                                 |  |  |
| 11      | NSS           | 1   | ASSY., FRONT HUB BRACKET W/ RUBBER INJECTION   |                                 |  |  |
| 12      | 401132        | 1   | SEAL, SPINDLE                                  |                                 |  |  |
| 13      | 401124        | 1   | SPINDLE, WHEEL-FRONT                           |                                 |  |  |
| 14      | 400297        | 1   | SHAFT, SUSPENSION                              |                                 |  |  |
| 15      | 500055        | 1   | TORSION ARM, LEFT                              |                                 |  |  |
| 16      | 500057        | 1   | TORSION TUBE                                   |                                 |  |  |
| 17      | PD5190-1.25CP | 6   | BOLT, FLANGE, 5/8"-11UNC X 1.25" GRD. 8 PLATED | TORQUE AT 211 FT/LBS            |  |  |
| 18      | 500203        | 1   | TORSION ARM, RIGHT W/STOP                      |                                 |  |  |
| 19      | 600459        | 1   | ASSY., FRONT RIGHT HUB                         |                                 |  |  |



### IMPORTANT NOTE:

All hubs that are on 86+ VTS units with a serial number of 33206 or higher can be rebuilt and parts are available. VTS units with a serial number of 33025 or less will have to order new hubs, parts are not available.

Reference contents page for additional notes

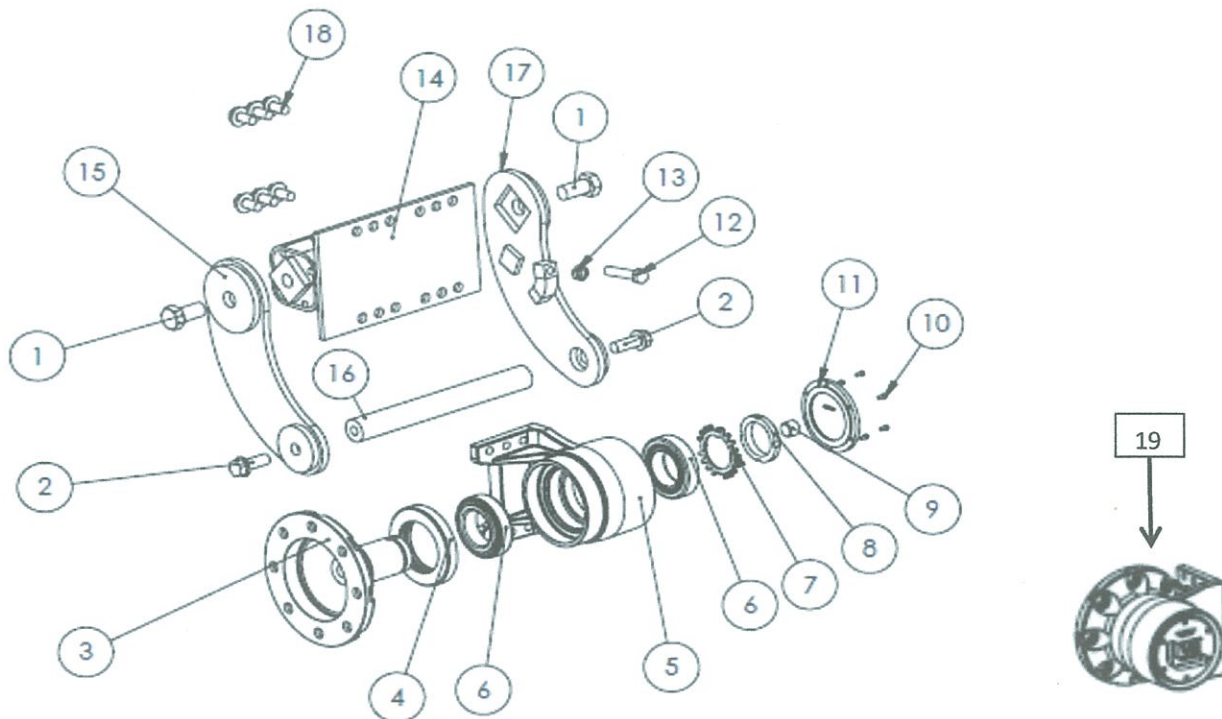


# VTS 86+ LH FRONT HUB ASSEMBLY

FOR ALL VTS 86+ MODELS

REV.050914

| REF:NO. | PART NUMBER   | QTY | DESCRIPTION                                   |                                 |  |  |
|---------|---------------|-----|---|---------------------------------|--|--|
| 1       | 400665        | 2   | BOLT, 1-14UNC X 2.00" GRD. 8 PLATED           | TORQUE AT 750 FT/LBS - CRITICAL |  |  |
| 2       | PD5210-2CP    | 2   | BOLT, FLANGE 3/4"-10UNC X 2.00" GRD. 8 PLATED | TORQUE AT 376 FT/LBS            |  |  |
| 3       | 401124        | 1   | SPINDLE, WHEEL FRONT                          |                                 |  |  |
| 4       | 401132        | 1   | SEAL, SPINDLE                                 |                                 |  |  |
| 5       | NSS           | 1   | ASSY., FRONT HUB BRACKET W/RUBBER INJECTION   |                                 |  |  |
| 6       | 401398        | 2   | BEARING, TAPERED ROLLER                       |                                 |  |  |
| 7       | 401447        | 1   | WASHER, LOCK                                  |                                 |  |  |
| 8       | 400350        | 1   | NUT, LOCK                                     |                                 |  |  |
| 9       | 400656        | 1   | SOCKET PIPE PLUG 3/4 X 3/4                    |                                 |  |  |
| 10      | 400518        | 6   | SCREW, CAP 10-24 X .375                       |                                 |  |  |
| 11      | 400513        | 1   | COVER, DUST                                   |                                 |  |  |
| 12      | PD0190-3CP    | 1   | BOLT 5/8"-11NC X 3.00" GRD. 8 PLATED FI THRD  |                                 |  |  |
| 13      | PH0190-5CP    | 1   | NUT 5/8-11UNC GRD. 8 JAM NUT                  |                                 |  |  |
| 14      | 500057        | 1   | TORSION TUBE                                  |                                 |  |  |
| 15      | 500054        | 1   | TORSION ARM                                   |                                 |  |  |
| 16      | 400297        | 1   | SHAFT, SUSPENSION                             |                                 |  |  |
| 17      | 500204        | 1   | TORSION ARM, LEFT WSTOP                       |                                 |  |  |
| 18      | PD5190-1.25CP | 6   | BOLT, FLANGE 5/8"-11UNC X 1.25" GRD. 8 PLATED | TORQUE AT 211 FT/LBS            |  |  |
| 19      | 600460        | 1   | ASSY., FRONT LEFT HUB                         |                                 |  |  |



## IMPORTANT NOTE:

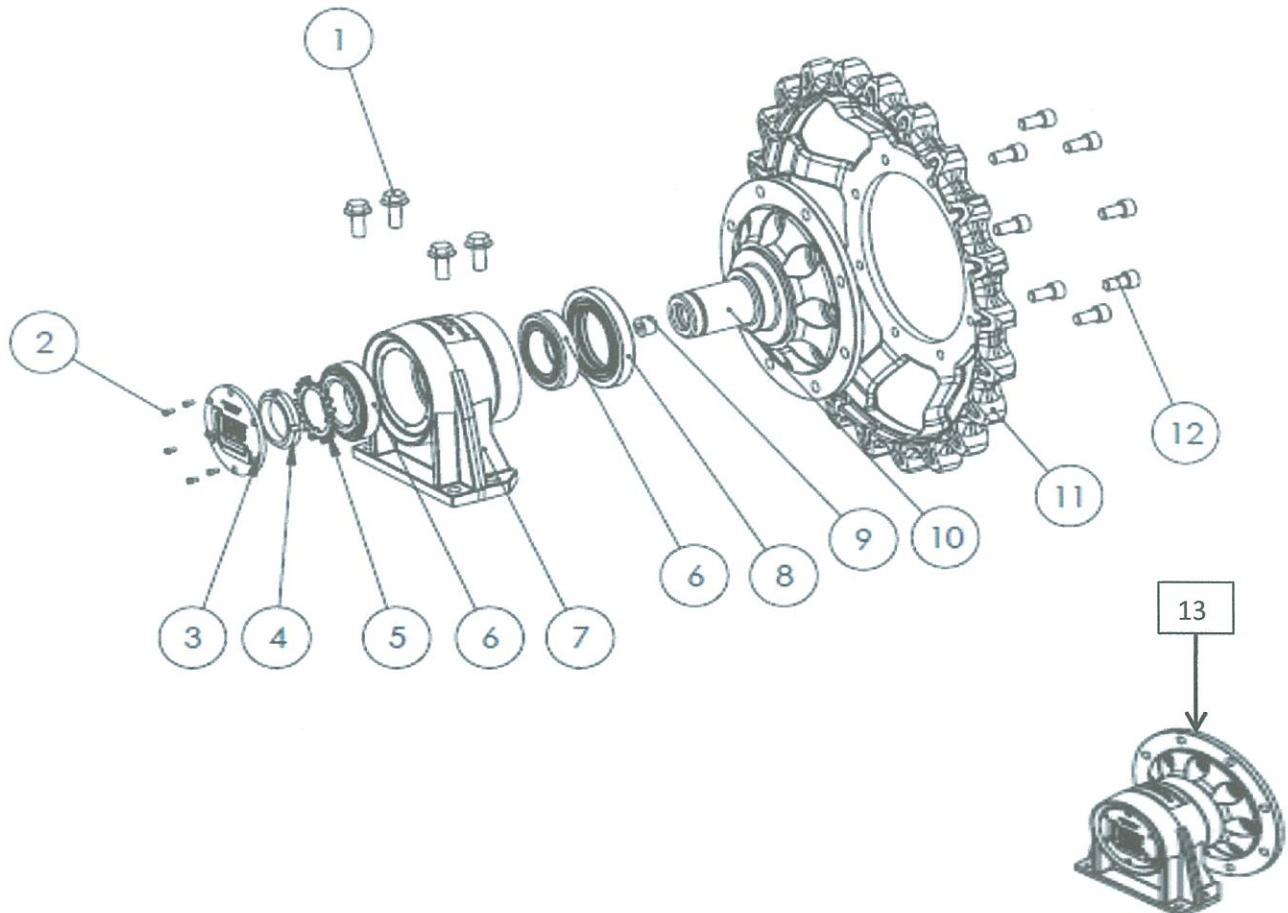
All hubs that are on 86+ VTS units with a serial number of 33206 or higher can be rebuilt and parts are available. VTS units with a serial number of 33205 or less will have to order new hubs, parts are not available.  
Reference contents page for additional notes.

## VTS 86+ REAR HUB ASSEMBLY

FOR ALL VTS 86+ MODELS

REV.050914

| REF:NO. | PART NUMBER  | QTY | DESCRIPTION                                  |                      |  |  |
|---------|--------------|-----|--|----------------------|--|--|
| 1       | PD5190-1.5CP | 4   | BOLT, FLANGE 5/8"-11UNC X 1.5" GRD. 8 PLATED | TORQUE AT 211 FT/LBS |  |  |
| 2       | 400518       | 6   | SCREW, CAP 10-24 X .375                      |                      |  |  |
| 3       | 400513       | 1   | COVER, DUST                                  |                      |  |  |
| 4       | 400350       | 1   | NUT, LOCK                                    |                      |  |  |
| 5       | 401447       | 1   | WASHER, LOCK                                 |                      |  |  |
| 6       | 401398       | 2   | BEARING, TAPERED ROLLER                      |                      |  |  |
| 7       | NSS          | 1   | ASSY., REAR HUB BRACKET W/INJECTED RUBBER    |                      |  |  |
| 8       | 401132       | 1   | SEAL, SPINDLE                                |                      |  |  |
| 9       | 400656       | 1   | SOCKET PIPE PLUG 3/4 X 3/4                   |                      |  |  |
| 10      | 401125       | 1   | SPINDLE, WHEEL-REAR                          |                      |  |  |
| 11      | 400914       | 1   | SPROCKET, 22 TOOTH                           |                      |  |  |
| 12      | 401075       | 8   | SCREW, CAP 5/8-11UNC X 1.25" GRD. 8 PLATED   | TORQUE AT 211 FT/LBS |  |  |
| 13      | 600461       | 1   | ASSY., REAR HUB                              |                      |  |  |



### IMPORTANT NOTE:

All hubs that are on 86+ VTS units with a serial number of 33206 or higher can be rebuilt and parts are available. VTS units with a serial number of 33205 or less, will have to order new hubs, parts are not available. Reference contents page for additional notes.

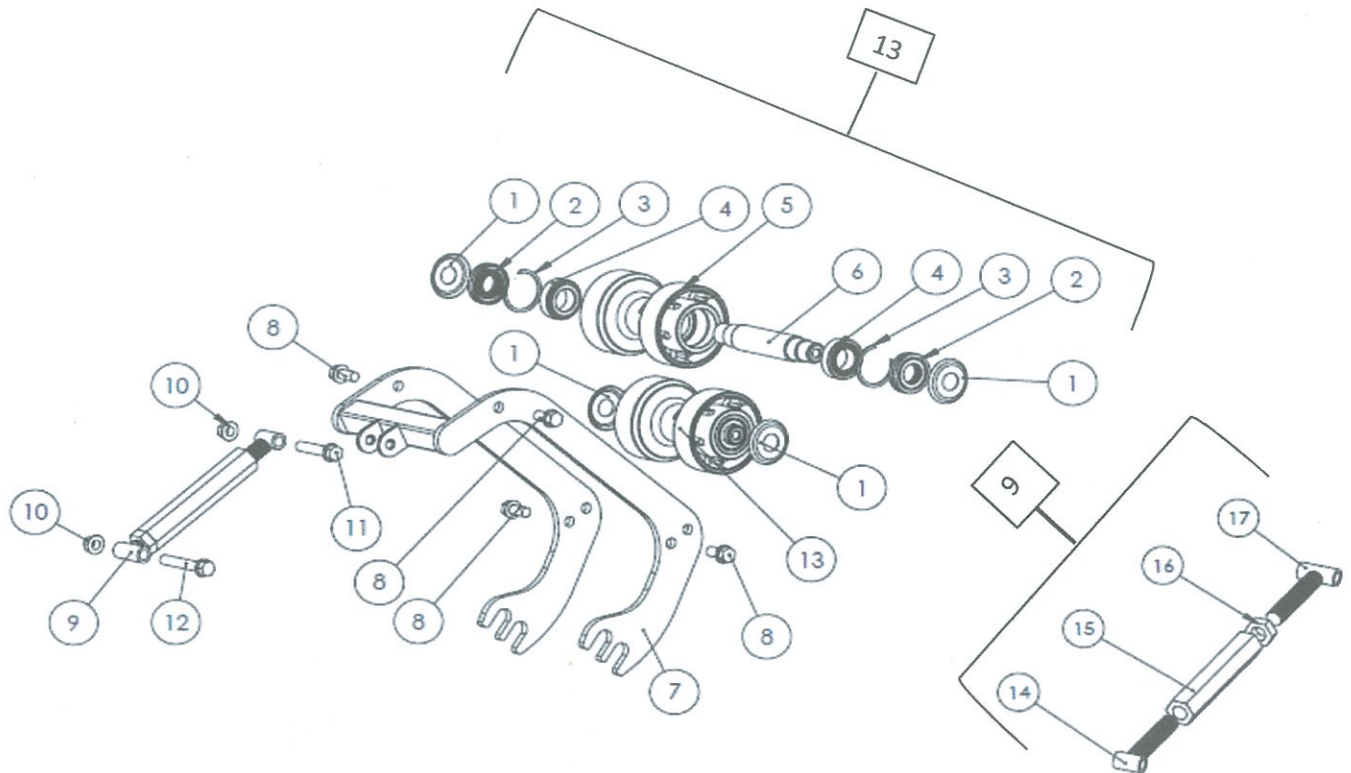


## VTS 86+ TENSION ARM ASSEMBLY

FOR ALL VTS 86+ MODELS

REV.050914

| REF:NO. | PART NUMBER  | QTY | DESCRIPTION                                    |                      |  |  |
|---------|--------------|-----|--|----------------------|--|--|
| 1       | 401118       | 4   | COVER, DUST                                    |                      |  |  |
| 2       | 401122       | 2   | SEAL, IDLER/ROLLER                             |                      |  |  |
| 3       | 401524       | 2   | SNAP RING                                      |                      |  |  |
| 4       | 401109       | 2   | BEARING, TAPERED ROLLER                        |                      |  |  |
| 5       | NSS          | 1   | ROLLER, TENSION                                |                      |  |  |
| 6       | 401117       | 1   | SHAFT, TENSION                                 |                      |  |  |
| 7       | 500514       | 1   | TENSION ARM                                    |                      |  |  |
| 8       | PD5210-1.5CP | 4   | BOLT, FLANGE, 3/4"-10UNC X 1.50" GRD. 8 PLATED | TORQUE AT 376 FT/LBS |  |  |
| 9       | 601209       | 1   | TURNBUCKLE ASSY.                               |                      |  |  |
| 10      | PH5210-4CP   | 2   | NUT, FLANGE, LOCK 3/4"-10UNC GRD. 8 PLATED     |                      |  |  |
| 11      | PD5210-3.5CP | 1   | BOLT, FLANGE, 3/4"-10UNC X 3.50" GRD. 8 PLATED | TORQUE AT 376 FT/LBS |  |  |
| 12      | PD5210-4.5CP | 1   | BOLT 3/4"-10UNC X 4.50" GRD. 8 PLATED          | TORQUE AT 376 FT/LBS |  |  |
| 13      | 600456       | 2   | ASSY., TENSION ROLLER                          |                      |  |  |
| 14      | 500423       | 1   | TENSION ROD                                    |                      |  |  |
| 15      | 401718       | 1   | SHAFT  |                      |  |  |
| 16      | 401310       | 1   | NUT 1 1/4-7UNC                                 |                      |  |  |
| 17      | 601210       | 1   | TENSION ROD                                    |                      |  |  |

**IMPORTANT NOTE:**

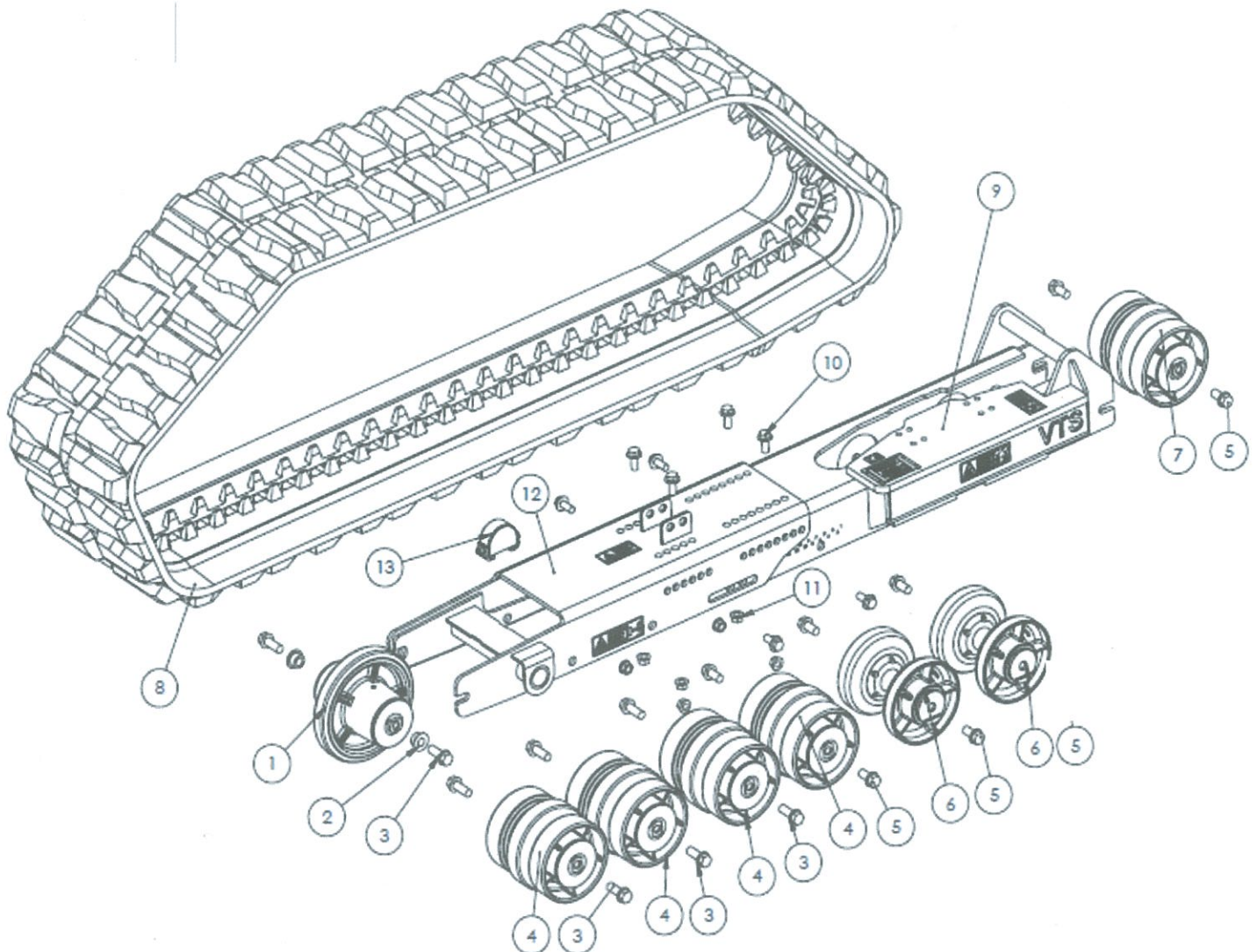
All rollers that are on 86+ VTS units with a serial number of 33206 or higher can be rebuilt and parts are available. VTS units with a serial number of 33205 or less will have to order new rollers, parts are not available. Reference contents page for additional notes.

## VTS 86 + TUNNEL ASSEMBLY

FOR ALL VTS 86+ MODELS (LH SHOWN)

REV.050914

| REF:NO. | PART NUMBER  | QTY | DESCRIPTION                                   |                      |  |  |
|---------|--------------|-----|---|----------------------|--|--|
| 1       | 601475       | 1   | FRONT IDLER                                   |                      |  |  |
| 2       | 402169       | 2   | BUSHING 1" OD X .781" ID                      |                      |  |  |
| 3       | PD5210-2CP   | 8   | BOLT, FLANGE, 3/4"-10UNC X 2.0" GRD. 8 PLATED | TORQUE AT 376 FT/LB  |  |  |
| 4       | 601462       | 4   | ASSEMBLY, BOGEY                               |                      |  |  |
| 5       | PD5210-1.5CP | 8   | BOLT, FLANGE, 3/4"-10UNC X 1.5" GRD. 8 PLATED | TORQUE AT 376 FT/LB  |  |  |
| 6       | 601816       | 4   | SPLIT BOGEY                                   |                      |  |  |
| 7       | 601493       | 1   | REAR IDLER                                    |                      |  |  |
| 8       | 401348       | 1   | TRACK, RUBBER 63 LINK, 18" WIDE               |                      |  |  |
| 9       | 500429       | 1   | LEFT REAR TUNNEL (SHOWN)                      |                      |  |  |
| 9       | 500431       | 1   | RIGHT REAR TUNNEL                             |                      |  |  |
| 10      | PD5190-1.5CP | 8   | BOLT, FLANGE, 5/8"-11UNC X 1.5" GRD. 8 PLATED | TORQUE AT 211 FT/LBS |  |  |
| 11      | PH5190-4CP   | 8   | FLANGE LOCK NUT 5/8" -11 GRD 8 PLATED         |                      |  |  |
| 12      | 500284       | 1   | LEFT FRONT TUNNEL (SHOWN)                     |                      |  |  |
| 12      | 500283       | 1   | RIGHT FRONT TUNNEL                            |                      |  |  |
| 13      | 600544       | 1   | DOWN STOP ASSY.                               |                      |  |  |



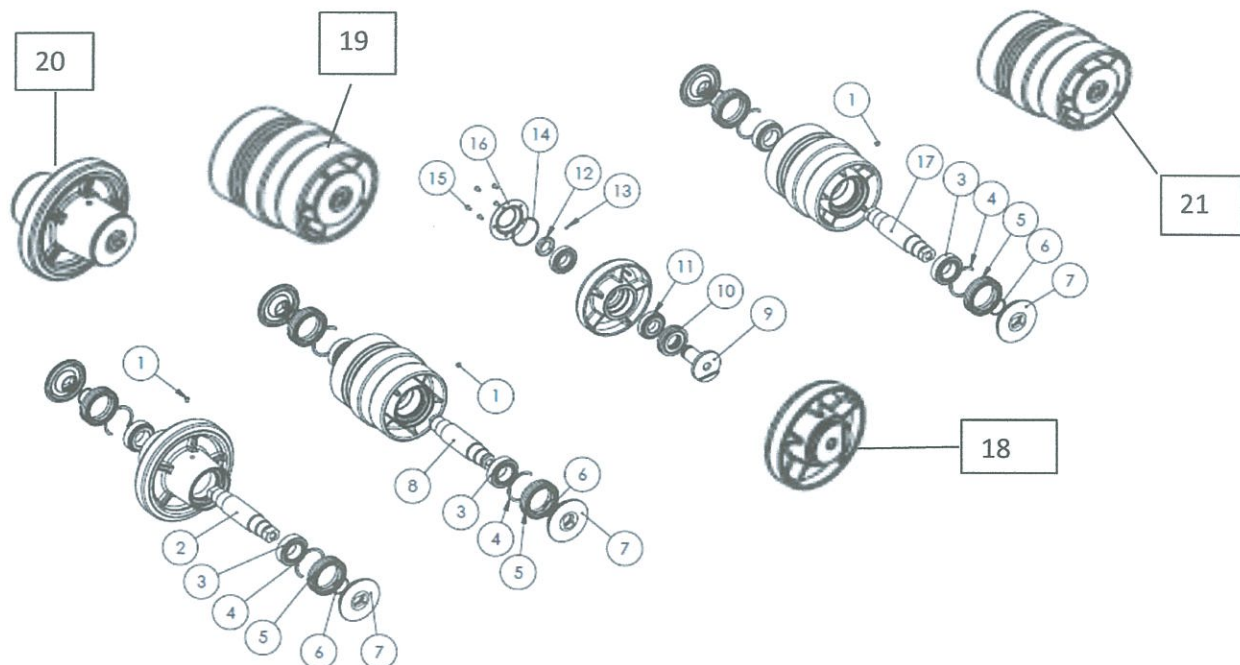


## VTS 86+ TUNNEL IDLER AND BOGIE ASSEMBLY

FOR ALL VTS 86+ MODELS

REV.050914

| REF:NO. | PART NUMBER | QTY | DESCRIPTION                                    |  |  |
|---------|-------------|-----|--|--|--|
| 1       | 402546      | 3   | SOCKET PIPE PLUG 1/8-27 NPT                    |  |  |
| 2       | 402320      | 1   | SHAFT, IDLER                                   |  |  |
| 3       | 401109      | 6   | BEARING, TAPERED ROLLER                        |  |  |
| 4       | 401524      | 6   | SNAP RING                                      |  |  |
| 5       | 402179      | 6   | SEAL, 73MM, DUAL CONE                          |  |  |
| 6       | 402210      | 6   | O-RING, ID 38.7MM, CROSS SECTION 3.55MM        |  |  |
| 7       | 402209      | 6   | RETAINER, SEAL                                 |  |  |
| 8       | 402332      | 1   | SHAFT, BOGIE                                   |  |  |
| 9       | 402522      | 1   | SHAFT, SPLIT BOGIE                             |  |  |
| 10      | 401122      | 1   | SEAL, IDLER/ROLLER                             |  |  |
| 11      | 401149      | 2   | BEARING, TAPERED ROLLER                        |  |  |
| 12      | 400736      | 1   | NUT, LOCK                                      |  |  |
| 13      | 401078      | 1   | SET SCREW FOR THE LOCK NUT TORQUE AT 30 FT-LBS |  |  |
| 14      | 402041      | 1   | O-RING   |  |  |
| 15      | 400603      | 5   | SCREW, CAP, BUTTON HD. 1/4"-20 X .50"          |  |  |
| 16      | 402042      | 1   | COVER, CAST-SPLIT BOGEY                        |  |  |
| 17      | 402321      | 1   | SHAFT FOR REAR IDLER                           |  |  |
| 18      | 601816      | 4   | SPLIT BOGEY                                    |  |  |
| 19      | 601462      | 4   | BOGEY  |  |  |
| 20      | 601475      | 1   | IDLER FRONT                                    |  |  |
| 21      | 601493      | 1   | REAR IDLER                                     |  |  |

**IMPORTANT NOTE:**

**IDLER, BOGEY AND SPLIT BOGEY CASTINGS ARE NSS. All rollers that have a serial number of 33206 or higher can be rebuilt. VTS units with a serial number of 33205 or less will have to order new bogeys, split bogeys and idlers. Reference contents page for additional notes.**