



65+ VTS

*Versatile Track System
FOR*

ALL 65+ MACHINES EXCEPT BOBCAT

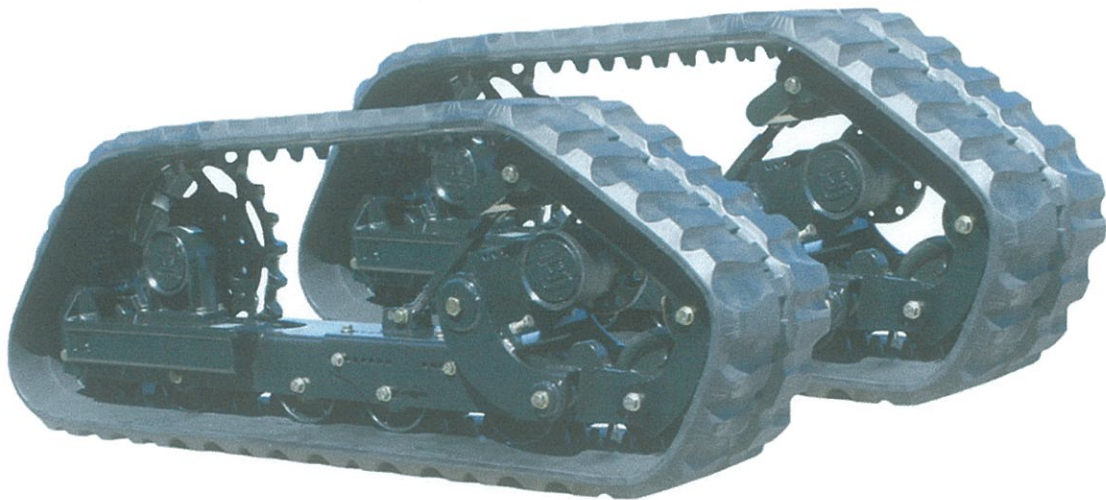


Table of Contents

VTS 65+ (ALL MODELS EXCEPT BOBCAT)

1. RH Front Hub Assembly	PAGE 13
2. LH Front Hub Assembly	PAGE 14
3. Rear Hub Assembly	PAGE 15
4. Tension Arm Assembly	PAGE 16
5. Tunnel Assembly	PAGE 17
6. Tunnel Idler and Bogies	PAGE 18

ADDITIONAL NOTES

VTS 50+

The 50+ VTS systems are the compact assemblies for the small skid steers that have a horse power range of 50 to 60 horse power. These VTS only come with a 12" or 15" wide track. The 50+ undercarriages are made of lighter gauge steel and cannot be used on the heavier higher horse power 65+ and 86+ machines.

65+ VTS The 65+ VTS systems are Heavier assemblies for the large skid steers that have a horse power range of 65 to 85 horse power. These VTS only come with 18" wide tracks only. The 65+ undercarriages are made of heavier gauge steel than the 50+ undercarriages.

86+ VTS The 86+ VTS systems have the same style undercarriage as the 65+, however, this undercarriage system has 4 bogey wheels instead of 3 and it also has 4 split bogey wheels instead of 2. The 86+ VTS systems only gets a 63 link 18" wide track, and will not fit on the 65+ horse power machines.

REPLACING BEARINGS AND SEALS ON VTS

COMPONENT PARTS ARE AVAILABLE TO REBUILD HUBS, BOGEYS, SPLITS BOGEYS, TENSION ROLLERS AND IDLERS FROM SERIAL NUMBER 33206 TO CURRENT. COMPONENT PARTS ARE NOT AVAILABLE TO REBUILD HUBS, BOGEYS, SPLITS BOGEYS, TENSION ROLLERS AND IDLERS FROM SERIAL NUMBER 20000 TO 33205. WHEN REPLACING ROLLERS WITH THE METAL FACE SEALS CONTACT THE FACTORY FOR SPECIAL HANDLING INSTRUCTIONS.

IMPORTANT

WHEN MOUNTING THE VTS TO THE MACHINE THE LUG NUTS NEED TO BE TORQUED AT **190 FT/LBS** DO NOT TORQUE TO THE TIRE TORQUE RATING.

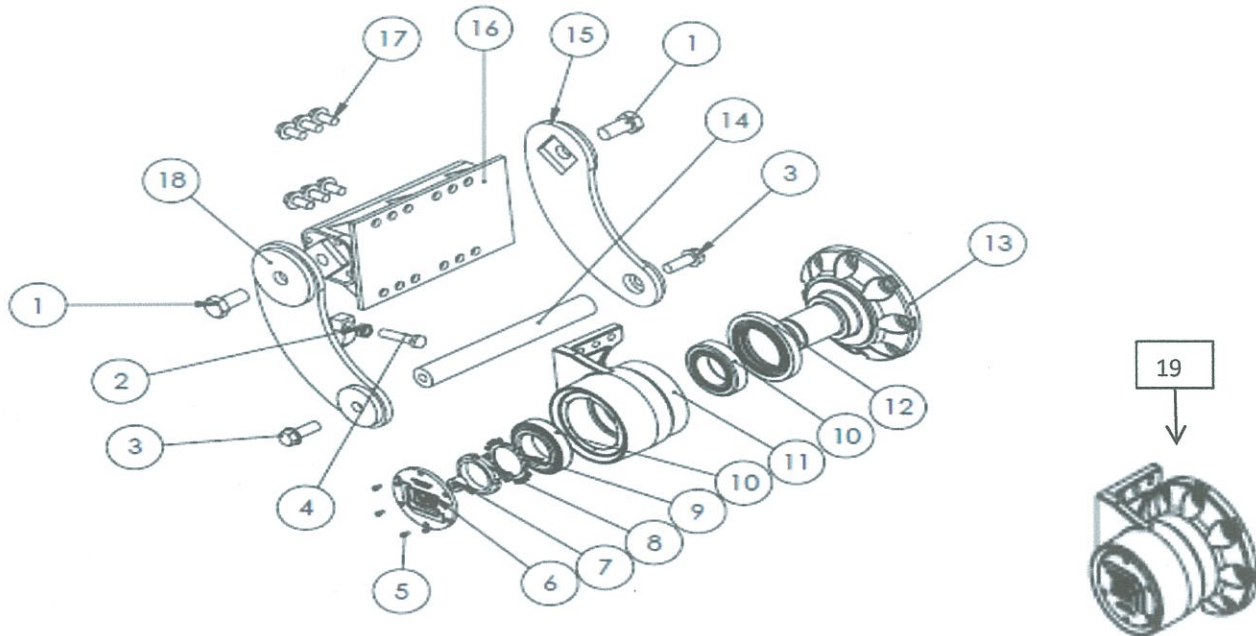
NOTE: The Caterpillar 246C, 256C and 262C get the 601209 Extended turnbuckle

VTS 65+ RH FRONT HUB ASSEMBLY

FOR ALL VTS 65+ MODELS EXCEPT BOBCAT

REV. 050914

REF:NO.	PART NUMBER	QTY	DESCRIPTION			
1	400665	2	BOLT, 1-14UNC X 2.00" GRD. 8 PLATED	TORQUE AT 750 FT/LBS - CRITICAL		
2	PH0190-5CP	1	NUT 5/8"-11UNC GRD. 8 JAM NUT			
3	PD5210-2CP	2	BOLT, FLANGE 3/4"-10UNC X 2.0" GRD. 8 PLATED	TORQUE AT 376 FT/LBS		
4	PD0190-3CP	1	BOLT 5/8"-11 NC X 3.0" GRD. 8 PLATED FI THRD.			
5	400518	6	SCREW,CAP 10-24 X .375			
6	400513	1	COVER, DUST			
7	400656	1	SOCKET PIPE PLUG 3/4 X 3/4			
8	400350	1	NUT, LOCK			
9	401447	1	WASHER,LOCK			
10	401398	2	BEARING , TAPERED ROLLER			
11	NSS	1	ASSY., FRONT HUB BRACKET W/ RUBBER INJECTION			
12	401132	1	SEAL, SPINDLE			
13	401124	1	SPINDLE, WHEEL-FRONT			
14	400297	1	SHAFT, SUSPENSION			
15	500055	1	TORSION ARM, LEFT			
16	500057	1	TORSION TUBE			
17	PD5190-1.25CP	6	BOLT, FLANGE, 5/8"-11UNC X 1.25" GRD. 8 PLATED	TORQUE AT 211 FT/LBS		
18	500203	1	TORSION ARM, RIGHT W/STOP			
19	600459	1	ASSY., FRONT RIGHT HUB			



IMPORTANT NOTE:

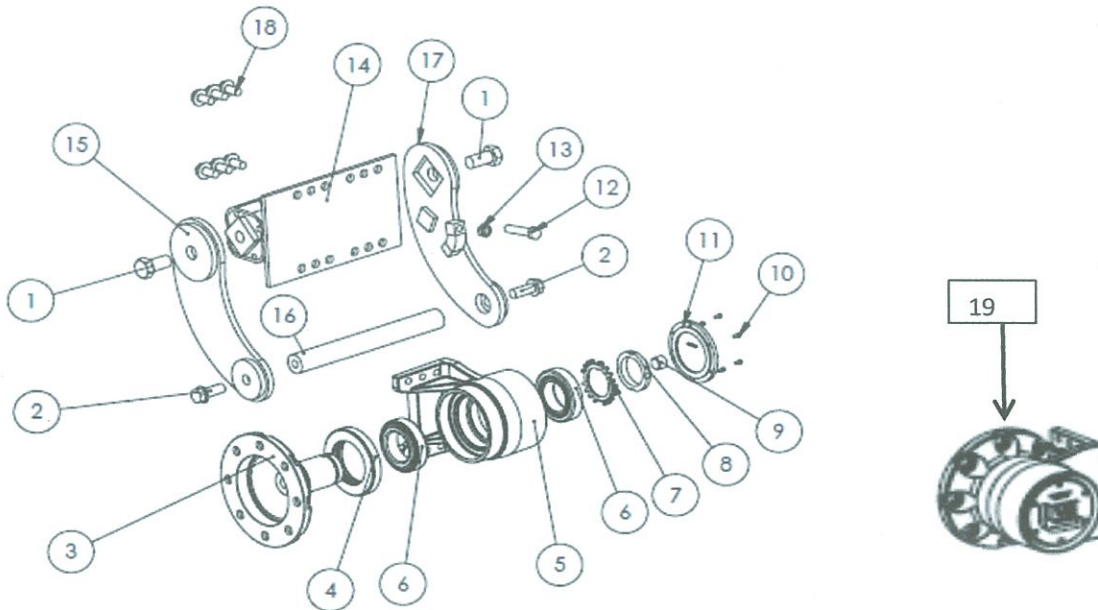
All hubs that are on 65+ VTS units with a serial number of 33206 or higher can be rebuilt and parts are available. VTS units with a serial number of 33205 or below, will have to order new hubs, parts are not available. Reference contents page for additional notes.

VTS 65+ LH FRONT HUB ASSEMBLY

FOR ALL VTS 65+ MODELS EXCEPT BOBCAT

REV.050914

REF:NO.	PART NUMBER	QTY	DESCRIPTION			
1	400665	2	BOLT, 1-14UNC X 2.00" GRD. 8 PLATED	TORQUE AT 750 FT/LBS - CRITICAL		
2	PD5210-2CP	2	BOLT, FLANGE 3/4"-10UNC X 2.00" GRD. 8 PLATED	TORQUE AT 376 FT/LBS		
3	401124	1	SPINDLE, WHEEL FRONT			
4	401132	1	SEAL, SPINDLE			
5	NSS	1	ASSY., FRONT HUB BRACKET W/RUBBER INJECTION			
6	401398	2	BEARING, TAPERED ROLLER			
7	401447	1	WASHER, LOCK			
8	400350	1	NUT, LOCK			
9	400656	1	SOCKET PIPE PLUG 3/4 X 3/4			
10	400518	6	SCREW, CAP 10-24 X .375			
11	400513	1	COVER, DUST			
12	PD0190-3CP	1	BOLT 5/8"-11NC X 3.00" GRD. 8 PLATED FI THRD			
13	PH0190-5CP	1	NUT 5/8-11UNC GRD. 8 JAM NUT			
14	500057	1	TORSION TUBE			
15	500054	1	TORSION ARM, RIGHT			
16	400297	1	SHAFT, SUSPENSION			
17	500204	1	TORSION ARM, LEFT WSTOP			
18	PD5190-1.25CP	6	BOLT, FLANGE 5/8"-11UNC X 1.25" GRD. 8 PLATED	TORQUE AT 211 FT/LBS		
19	600460	1	ASSY., FRONT LEFT HUB			



IMPORTANT NOTE:

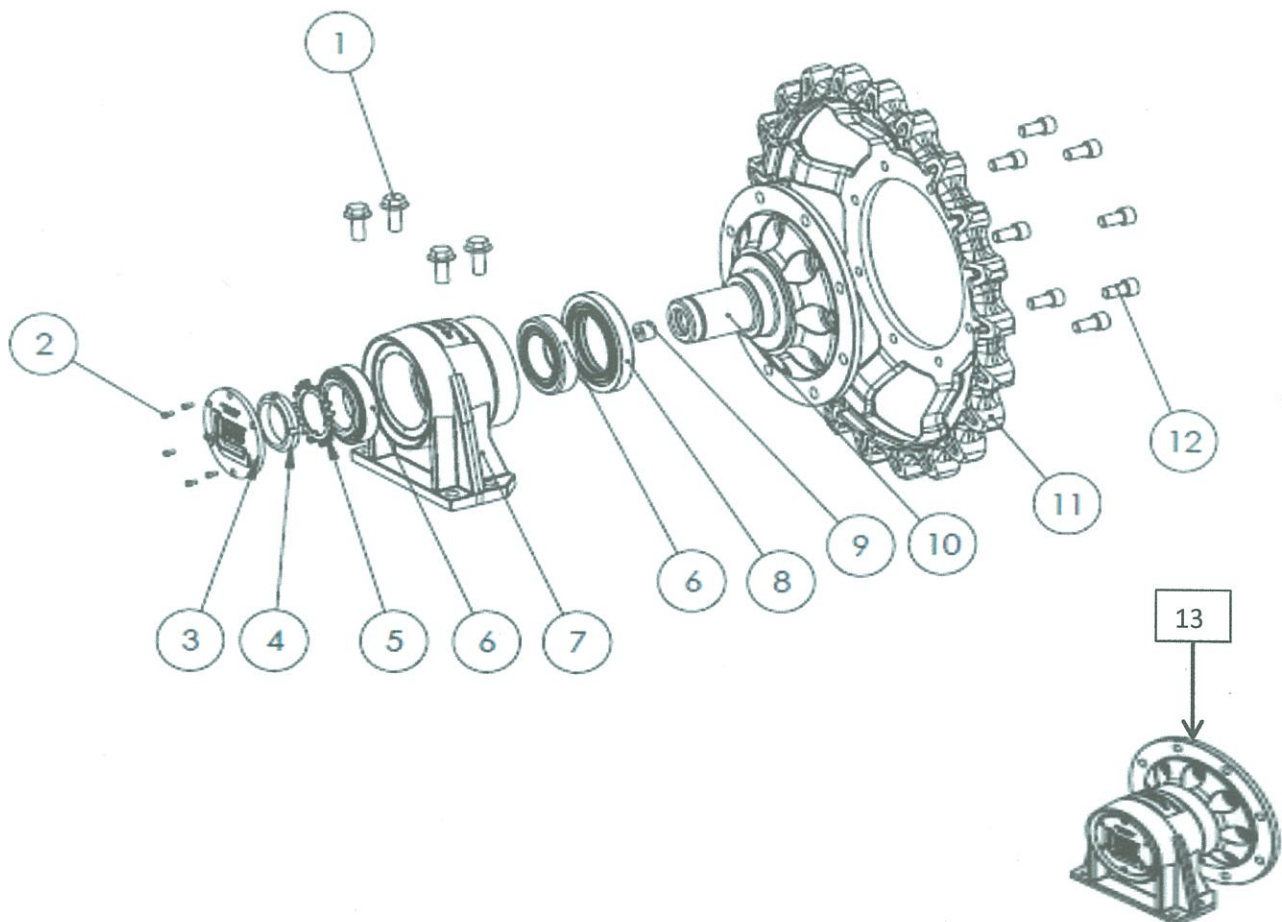
All hubs that are on 65+ VTS units with a serial number of 33206 or higher can be rebuilt and parts are available. VTS units with a serial number of 33205 or below, will have to order new hubs, parts are not available. Reference contents page for additional notes.

VTs 65+ REAR HUB ASSEMBLY

FOR ALL VTs 65+ MODELS EXCEPT BOBCAT

REV.050914

REF:NO.	PART NUMBER	QTY	DESCRIPTION			
1	PD5190-1.5CP	4	BOLT, FLANGE 5/8"-11UNC X 1.5" GRD. 8 PLATED	TORQUE AT 211 FT/LBS		
2	400518	6	SCREW, CAP 10-24 X .375			
3	400513	1	COVER, DUST			
4	400350	1	NUT, LOCK			
5	401447	1	WASHER, LOCK			
6	401398	2	BEARING, TAPERED ROLLER			
7	NSS	1	ASSY., REAR HUB BRACKET W/INJECTED RUBBER			
8	401132	1	SEAL, SPINDLE			
9	400656	1	SOCKET PIPE PLUG 3/4 X 3/4			
10	401125	1	SPINDLE, WHEEL-REAR			
11	400914	1	SPROCKET, 22 TOOTH			
12	401075	8	SCREW, CAP 5/8-11UNC X 1.25" GRD. 8 PLATED	TORQUE AT 211 FT/LBS		
13	600461	1	ASSY., REAR HUB			



IMPORTANT NOTE:

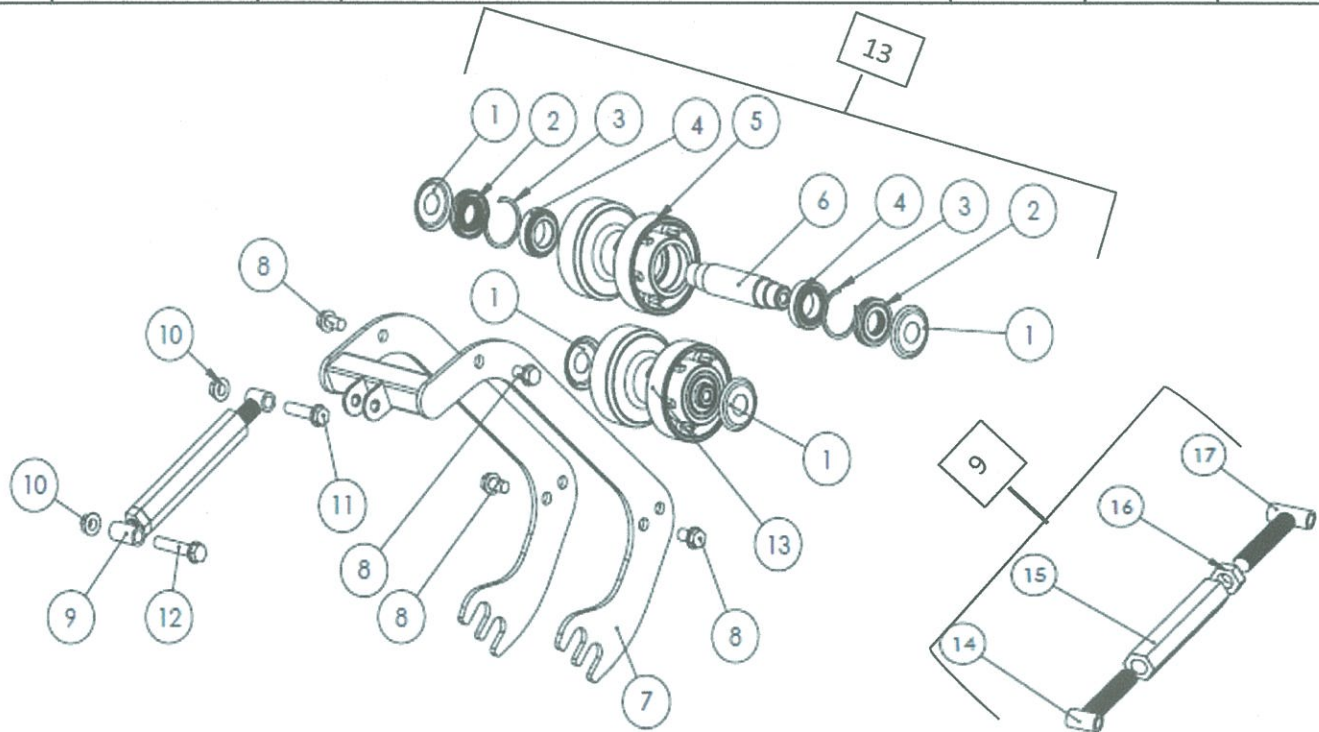
All hubs that are on 65+ VTS units with a serial number of 33206 or higher can be rebuilt and parts are available. VTS units with a serial number of 33205 or below, will have to order new hubs, parts are not available. Reference contents page for additional notes.

VTS 65+ TENSION ARM ASSEMBLY

FOR ALL VTS 65+ MODELS

REV.050914

REF:NO.	PART NUMBER	QTY	DESCRIPTION			
1	401118	4	COVER, DUST			
2	401122	2	SEAL, IDLER/ROLLER			
3	401524	2	SNAP RING			
4	401109	2	BEARING, TAPERED ROLLER			
5	NSS	1	ROLLER, TENSION			
6	401117	1	SHAFT, TENSION			
7	500514	1	TENSION ARM			
8	PD5210-1.5CP	4	BOLT, FLANGE, 3/4"-10UNC X 1.50" GRD. 8 PLATED	TORQUE AT 376 FT/LBS		
9	600546	1	TURNBUCKLE ASSY. SEE NOTES BELOW			
10	PH5210-4CP	2	NUT, FLANGE, LOCK 3/4"-10UNC GRD. 8 PLATED			
11	PD5210-3.5CP	1	BOLT, FLANGE, 3/4"-10UNC X 3.50" GRD. 8 PLATED	TORQUE AT 376 FT/LBS		
12	PD5210-4.5CP	1	BOLT 3/4"-10UNC X 4.50" GRD. 8 PLATED	TORQUE AT 376 FT/LBS		
13	600456	2	ASSY., TENSION ROLLER			
14	500286	1	TENSION ROD			
15	401309	1	SHAFT			
16	401310	1	NUT 1 1/4-7UNC			
17	600545	1	TENSION ROD			

**IMPORTANT NOTE:**

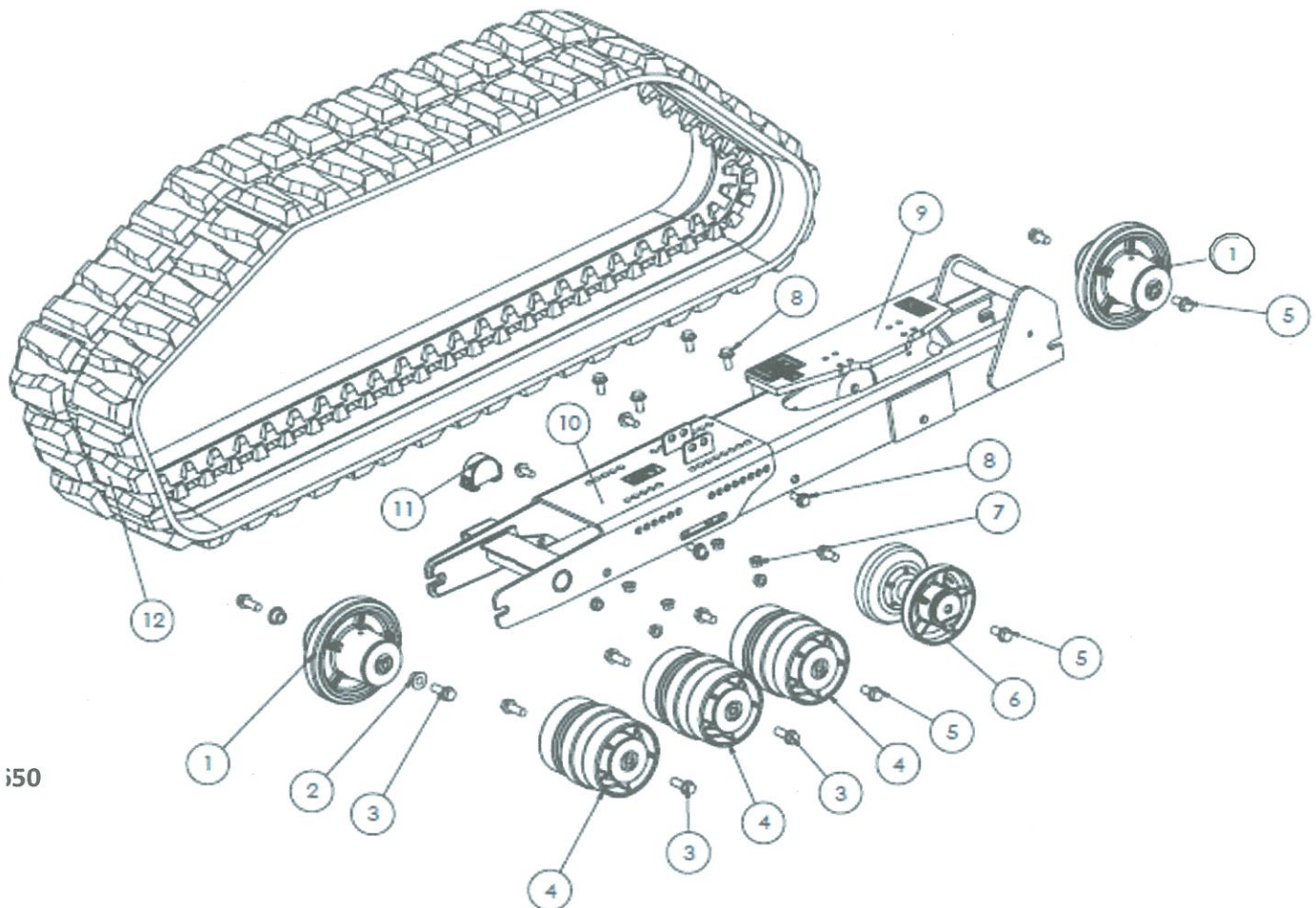
All rollers that are on 65+ VTS units with a serial number of 33206 or higher can be rebuilt and parts are available. VTS units with a serial number of 33205 or below, will have to order new rollers, parts are not available. Reference contents page for additional notes. The Caterpillar 246C, 256C and 262C get the 601209 extended turnbuckle.

VTS 65+ TUNNEL ASSEMBLY

FOR ALL VTS 65+ MODELS EXCEPT BOBCAT

REV.050914

REF:NO.	PART NUMBER	QTY	DESCRIPTION			
1	601475	2	ASSY., IDLER GUIDE SEE NOTES ON PAGE 18			
2	402169	2	BUSHING 1" OD X .781" ID			
3	PD5210-1.5CP	6	BOLT, FLANGE, 3/4"-10UNC X 1.5" GRD. 8 PLATED	TORQUE AT 376 FT.LBS		
4	601462	3	ASSY. , IDLER GUIDE			
5	PD5210-2CP	6	BOLT, FLANGE, 3/4"-10UNC X 2.0" GRD. 8 PLATED	TORQUE AT 376 FT.LBS		
6	601816	2	BOGIE, SPLIT			
7	PH5190-4CP	8	NUT, FLANGE, LOCK 5/8"-11UNV GRD. 8 PLATED			
8	PD5190-1.5CP	8	BOLT, FLANGE, 5/8"-11UNC X 1.5" GRD. 8 PLATED	TORQUE AT 211 FT.LBS		
9	500175	1	RIGHT REAR TUNNEL (SHOWN)			
10	500176	1	LEFT REAR TUNNEL			
11	500294	1	RIGHT FRONT TUNNEL (SHOWN)			
12	500293	1	LEFT FRONT TUNNEL			
	600544	1	DOWN STOP ASSY.			
	400285	1	TRACK, RUBBER, 56 LINK 18" WIDE			
	401338	1	TRACK, RUBBER, 58 LINK 18" WIDE			
	401087	1	TRACK, RUBBER, 59 LINK 18" WIDE			
	400527	1	TRACK, RUBBER, 60 LINK 18" WIDE			



ISO

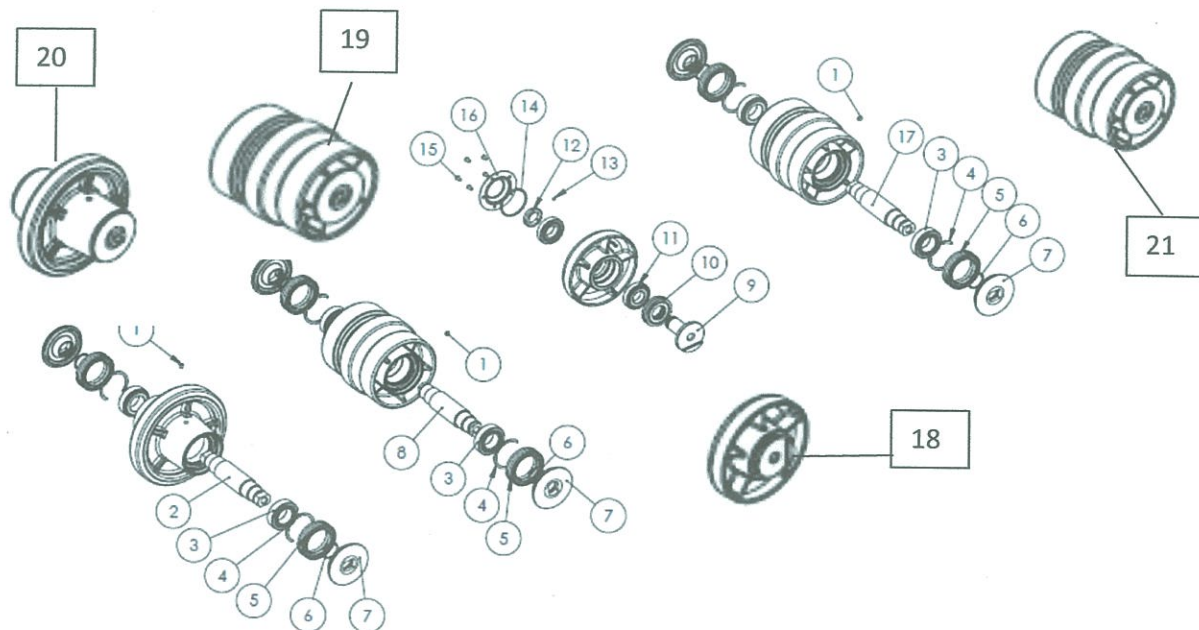
VTS 65+ TUNNEL IDLER AND BOGIE ASSEMBLY

FOR ALL VTS 65+ MODELS

REV.050914

REF:NO.	PART NUMBER	QTY	DESCRIPTION		
1	402546	3	SOCKET PIPE PLUG 1/8-27 NPT		
2	402320	1	SHAFT, IDLER		
3	401109	6	BEARING, TAPERED ROLLER		
4	401524	6	SNAP RING		
5	402179	6	SEAL, 73MM, DUAL CONE		
6	402210	6	O-RING, ID 38.7MM, CROSS SECTION 3.55MM		
7	402209	6	RETAINER, SEAL		
8	402332	1	SHAFT, BOGIE		
9	402522	1	SHAFT, SPLIT BOGIE		
10	401122	1	SEAL, IDLER/ROLLER		
11	401149	2	BEARING, TAPERED ROLLER		
12	400736	1	NUT, LOCK		
13	401078	1	SET SCREW FOR THE LOCK NUT TORQUE AT 30 FT-LBS		
14	402041	1	O-RING		
15	400603	5	SCREW, CAP, BUTTON HD. 1/4"-20 X .50"		
16	402042	1	COVER, CAST-SPLIT BOGEY		
17	402321	1	SHAFT FOR REAR IDLER		
18	601816	2	SPLIT BOGEY		
19	601462	3	BOGEY		
20	601475	2	IDLER FRONT AND REAR SEE NOTES BELOW		
21	601493	1	REAR IDLER FOR CERTAIN MODELS SEE NOTES BELOW		

is on this drawing.
of the assembly.



IMPORTANT NOTE: IDLER, BOGEY AND SPLIT CASTINGS ARE NSS: All rollers on the 65+ VTS units with serial number 33206 or higher can be rebuilt. VTS units with serial number 33205 or below will have to order new rollers parts are not available. THE FOLLOWING MACHINES HAVE A 601493 REAR IDLER INSTEAD OF THE 601475 IDLER: **BOBCAT:** S630 and S650 **CASE:** SR220, SR250, SV250 AND SV300 **NEW HOLLAND:** L223, L225 and L230