

March 2010

**BEFORE OPERATING**  
**THE DAVCO<sup>®</sup> BRUSH CUTTER**  
**ACCOMPANYING THIS MANUAL,**  
**PLEASE INSTALL**  
**THE INCLUDED CAUTION DECALS**  
**IN THE CAB OF THE BRUSH CUTTER**  
**CARRIER IN A HIGHLY VISIBLE AREA**

March 6, 2009

March 2010

## **WELCOME**

***Congratulations* on your purchase of a DAVCO® Manufacturing BC604SS Brush Cutter. The DAVCO® Brush Cutter, when combined with an approved carrier, will provide you with unmatched durability, productivity and versatility. As an Owner or Operator, it is your responsibility to learn the capabilities and limitations of the DAVCO® BC604SS Brush Cutter to maximize both safety and performance. Before operating this DAVCO® product, make sure you read and understand this owner's manual as well as your carrier's operations manual. If you have any questions or comments regarding this or other DAVCO® products, don't hesitate to contact us by phone @ (780) 532-0097, by fax @ (780) 532-7101 or by e-mail: [mulchers@telus.net](mailto:mulchers@telus.net).**

March 6, 2009



## **Personal & Property Safety**

- **Brush cutting, mowing, or other operations that can cause flying debris, can be a fire hazard in the carrier. With the engine off and cool, regularly inspect and clean the engine compartment and other areas where there may be hot or rotating parts. This should be performed as often as needed to prevent the combustion of this debris. Failure to do so could result in a fire, causing severe machine damage, injury or death.**
- **DO NOT operate DAVCO ® Brush Cutters within 200 yards of living things or items susceptible to damage from flying debris or falling trees.**
- **DO NOT operate without safety approved shielding (door). Proper Personal Protective Equipment (i.e. Safety glasses, hard hat, dust mask, etc.) is highly recommended. Failure to do so could result in damage, injury or death.**
- **When the disc is rotating, DO NOT tilt the DAVCO® Brush Cutter so the knives are in line with the operator.**
- **Before servicing or leaving the cab: be sure the hydraulics are disengaged, the engine is shut off, and the discs have come to a complete stop. (Note: to prevent run-on, try to stall the disc into the ground or brush and disengage the hydraulics.)**
- **To remove debris from the brush cutter, the brush cutter must remain flat on the ground. Any other method may result in damage, injury or death.**
- **DO NOT straighten bent cutting knives. Straightening bent knives may cause cracking. Bent knives should be replaced with new DAVCO ® replacement knives.**

March 2010

## **SPECIFICATIONS:**

**Attachment type: Industrial Brush Cutter**

**Model Number: BC604 SS**

**Attachment Weight: 1500 lbs.**

**Required Hydraulic Flow: 22-30gpm**

**Required Hydraulic Pressure: 3000 psi**

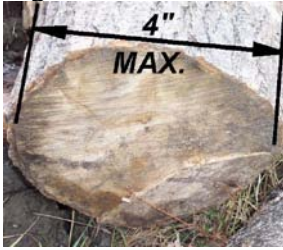
## **PLEASE NOTE:**

- It is the responsibility of the owner/operator to inspect and maintain parts and equipment for the utmost reliability and safety.
- Periodically check all nuts and bolts for proper tightness and excessive wear.
- For the owner/operator's convenience, DAVCO@Manufacturing has provided a parts list in this operator's manual for replacement parts. *Factory Replacement parts are to be used to maintain warranty.*
- Before shutting off the hydraulic motor, gradually throttle down to idle before disengaging the hydraulic valve. This helps to prevent cavitation in the hydraulic motor, and to help slow the cutting disc down; it can be stalled into the ground or brush after being disengaged.
- Route Hoses properly & watch your hoses, pinched hoses are not warrantable

March 2010

### 3. General Operations

Fig. 3-1



\*The BC-604SS model DAVCO® Brush Cutter is rated for cutting vegetation and trees up to 4 inches in diameter.

Fig. 3-2



For optimal performance, the DAVCO® Brush Cutter should be kept level with the ground during operation (see Fig. 3-2). *Caution-to prevent damage to your DAVCO® Brush Cutter take care to avoid hidden obstacles such as rocks, underground wires and other buried objects.*

Fig. 3-3



Figure 3-3 shows a common position for the DAVCO® Brush Cutter during operation. This cutting position is also a very effective method of mulching debris into finer pieces. *Note: excessive tilting of the Davco® Brush Cutter is not recommended, although slight tilting of the deck into the direction of travel can increase cutting efficiency.*

Fig. 3-4



\*Figures 3-4 demonstrates a method of brush cutting that is not recommended. Cutting in this manner throws debris outward and increases the likelihood of bending the cutting blades.

March 2010

Fig. 3-5



*Never expose the underside of the DAVCO® Brush Cutter to the operator's cab (Fig. 3-5) or to personnel within sight of the machine. Flying debris can cause equipment damage, serious injury or death. Never exit cab while loader arms are raised.*

#### 4. Knife change

Fig. 4-1



Remove the disc inspection cover (1) in Fig. 4-1 to gain access to the top of the disc. Rotate the disc by hand until the first set of knife bolts are visible in the hole.

Fig. 4-2



To remove the knives, set the DAVCO® Brush Cutter on the stand or blocks, undo the nuts (as illustrated on Fig 4-2), drop the bolts, and then remove the knives and the pucks horizontally. To install the knives, reverse the procedure, and torque the bolts to **250 ft/lb for Course thread or 300 ft lbs for fine thread bolts.** ***Note- Remember to re-torque the bolts after the first 8 hours of operation following a knife replacement***

#### 5. Identification

Fig 5-1

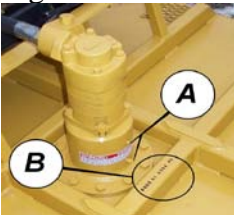
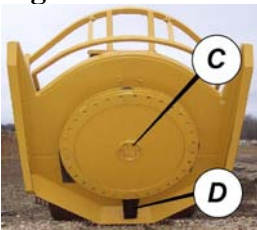


Fig. 5-1 shows the identification of the DAVCO® Brush Cutter that includes the serial numbers and the model (B). *Please refer to these numbers when calling for technical support, or replacement parts.*

Fig 6-1



**Spindle bolts** (Item A in Figure 6-1) must be torqued to **300 ft/lb**. Inspect periodically.

March 2010

## Maintenance & Tips

- **Grease Daily:** Four or five pumps of quality grease from a hand pump grease gun, which meet the NLGI GC/LB requirements to *each bearing's* grease nipple once a day minimum.
- **Cutting Knives** are to be inspected *daily* for sharpness, excessive wear or bending (If used while bent, damage to the bolts, pucks and discs may occur). DAVCO® knives can be sharpened, or turned over. ***DO NOT*** straighten bent cutting knives.
- **Pucks** are to be inspected periodically and with every knife change for excessive wear. Rotate the pucks *1/3 of a turn* with each new knife and replaced if necessary. **For maximum Puck life put a coating of assembly grease around the outside of the puck.**
- **Knife bolts** to be inspected with every knife change for excessive wear or bending. Bolts have to be changed if any damage is found. Torque the knife bolts to **250 ft/lbs.** for Course thread or 300 ft lbs for fine thread bolts. **Re-torque the knife bolts after the first 8 hours of use, and as required thereafter.**
- **Stover nuts** to be inspected and changed with every third knife change because they may lose their self-locking ability(**When using Course thread bolts.**)
- **Discs** need to be inspected at regular intervals. After excessive use cracks may appear, if this is the case the disc assemblies must be changed.
- **Housing Bearings:** With the disc rotating at a low RPM, listen for rumbling or grinding sounds in the housing, which could be a sign of possible bearing failure.
- **Spindle Nut** (item #3, on Fig. 7-1) torque must not exceed **200 in/lb.** Excessive preload on bearings will cause premature failure. Check pre-load every 200hrs.
- Maintain a constant RPM on the DAVCO® Brush Cutter, using the travel speed of the carrier to determine the thoroughness of the cut. The slower that the carrier travels, the more complete the cut that the DAVCO® Brush Cutter will make, and the finer the mulch.

March 6, 2009

March 2010

**8. Parts List (BC 604 SS). Refers to Figs. 7-1, 7-2 & 7-3**

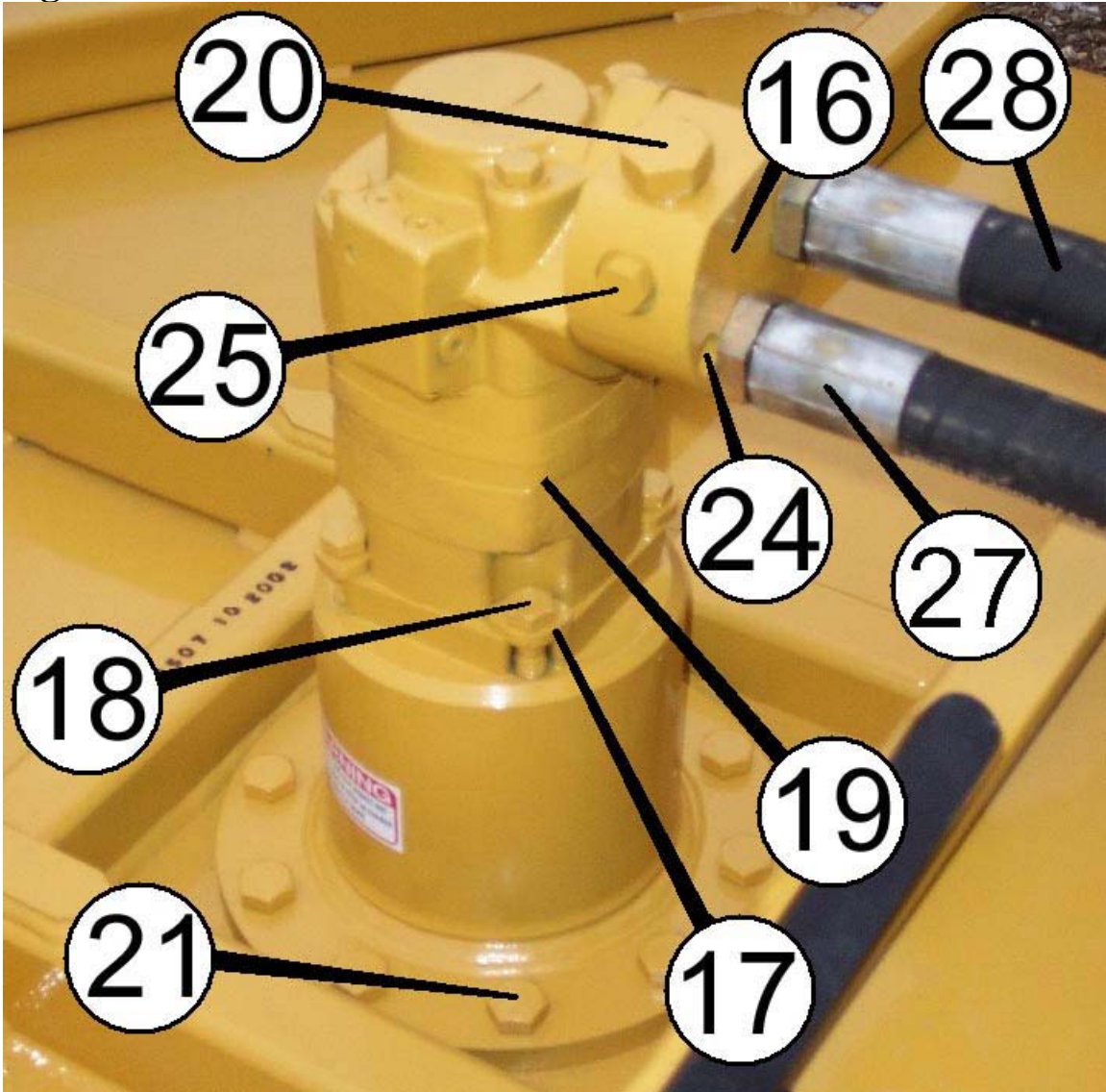
1	0166-063	1	Spindle Nut Lock Plate
2	0166-062	1	Spindle Housing
3	0402-097	1	Spindle Nut
4	0166-038	1	Spindle
5	0402-089	1	Bearing & Seal Kit
6	0166-061	1	Top Disc
7	0402-088	4	Puck
8	0402-091	4	Cutting Knife
9	750	1	Knife Bolt Kit (supersedes 0402-092)
10	0166-011	1	Spindle Bolt Kit
11	0166-047	1	Bottom Disc Assy
	631	1 set	Bolt head Guard *
12	0166-021	1	Spindle Bolt Guard
13	208A	4	Bolt
14	0166-037	1	Disc Spacer
15	0402-087	1	Motor Pilot Ring
16	0402-095	1	Anti-Cavitation Housing
17	0402-086	4	Motor Washer
18	209	4	Bolt
19	0402-093	1	Hydraulic Motor
20	0402-094	1	Anti Cavitation Cartridge
21	210	10	Bolt
22	213	1	Grease Nipple*
23	204	1	Grease Nipple*
24	205A	4	Allen Head Cap Screw
25	206	1	M-ORB Hex Head Plug
26	214	2	O-Ring
27	Depends On Carrier	2	Quick Coupler
28	Depends On Carrier	2	Hose
29	0166-008	1	Safety Bar
30	0166-003	2	Rod End Kit
32	121	1	Inspection cover (See Figure 4-1)

\* Not Shown



March 2010

**Fig. 7-2**



March 6, 2009

March 2010

**DAVCO**®  
**BRUSH CUTTER**  
***One (1) Year WARRANTY***

The warranty herein set forth applies solely to the **DAVCO**® Brush cutter:

**SERIAL NUMBER** \_\_\_\_\_.

Manufactured by **DAVCO**® Manufacturing Ltd. and is in lieu of all other warranties, expressed or implied. No person, agent, or dealer is authorized or empowered to give any other warranty or to assume any other liability on behalf of **DAVCO**® Manufacturing Ltd. The warranty is limited to the original purchaser only; no warranty is transferable to any subsequent owner.

**DAVCO**® Manufacturing Ltd. warrants the **DAVCO**® Brush Cutter against defects in material and workmanship under normal use and service for a period of one year with unlimited hours from the date of delivery, and will repair or replace at **DAVCO**® Manufacturing Ltd.'s discretion, free of charge to the original purchaser, any part that our examination reveals to be defective in material or workmanship. The warranty includes labor based on a flat rate, but does not include transportation costs, diagnosing time, clean up, or consequential damages. (Motor damage due to carrier hydraulic system contamination is not covered.)

**1. Only Original Equipment parts are covered by this warranty.**

**2. Wear items are not covered against normal use.**

**DAVCO**® Manufacturing Ltd. reserves the right to inspect components and or parts prior to any decision involving a warranty claim. In no case shall **DAVCO**® Manufacturing Ltd. grant a remedy that exceeds the purchase price of the component or part, and or the time to remove and or replace the component or part.

**DAVCO**® Manufacturing Ltd. reserves the right to make design changes without incurring any obligation to make such changes to previously manufactured equipment.

This warranty does NOT apply to damage caused by misuse, abuse, neglect (lack of lubrication), or improper adjustment, accident, or improper application. Any repairs or alterations made to the equipment without written authorization from **DAVCO**® Manufacturing Ltd. will void this warranty.

***NO OTHER WARRANTY OR GUARANTEE OF ANY KIND IS MADE BY DAVCO® MANUFACTURING LTD. EXPRESSED OR IMPLIED, STATUTORY, BY OPERATION OR LAW, OR OTHERWISE, INCLUDING MERCHANTABILITY AND FITNESS FOR ANY PARTICULAR PURPOSE. DAVCO MANUFACTURING LTD. DISCLAIMS LIABILITY FOR DIRECT, INDIRECT, INCIDENTAL, OR CONSEQUENTIAL DAMAGES OF ANY KIND.***

**WARRANTY LIMITATIONS:**

**Modifications:** The limited warranty covers the **DAVCO**® Brush cutter as built by **DAVCO**® Manufacturing Ltd.

**Carriers:** Most skid steers with adequate hydraulic flows.